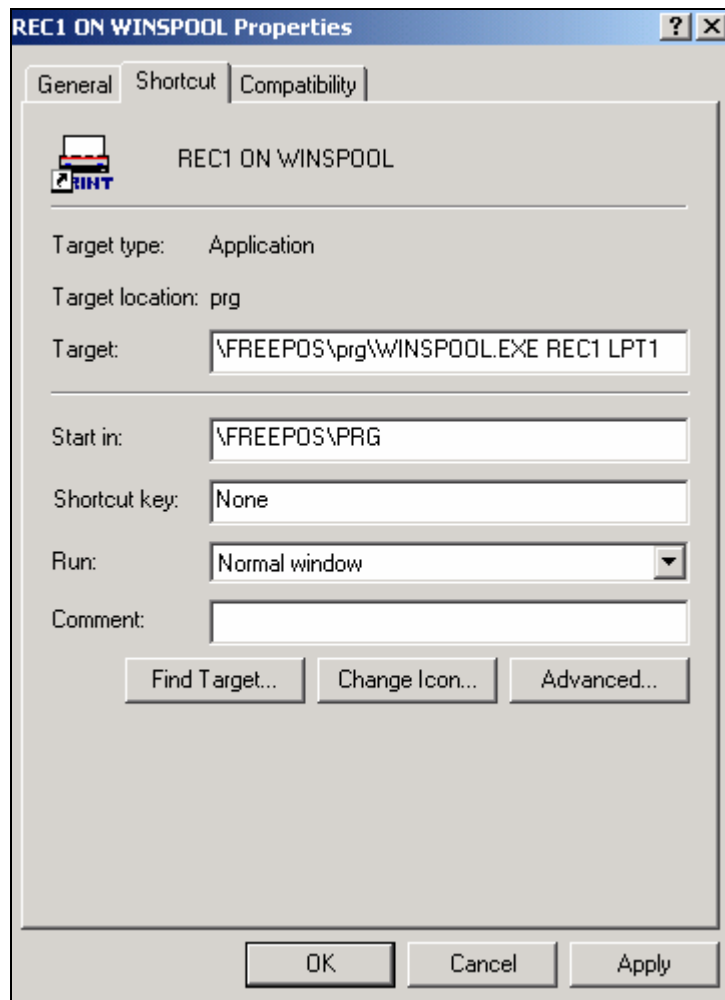


# WINSpool

---

As many FreePOS users have commented, setting up printers takes a little bit of effort. And since many sites don't care about print job redirection or the other fancy-pants printing options that pspooler, comspool & tcpool provide, why not make it easier? With this idea in mind, WINSpool was created... all it does is send print jobs to NETWORK SHARED PRINTERS or to LPT ports. It is extremely simple to configure because there is no configuration!

Let's setup REC1 to print to the Epson Thermal Printer on the LPT1 port:



As you can see, there are 2 parameters after the WINSPPOOL command. The first is the name of the spooler. The second is the PORT you wish to print to. The port may be any one of the following:

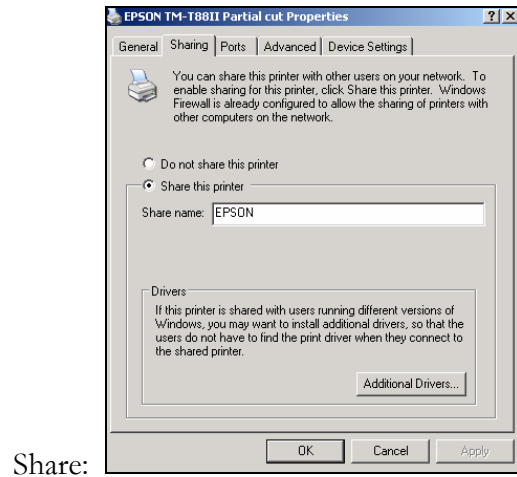
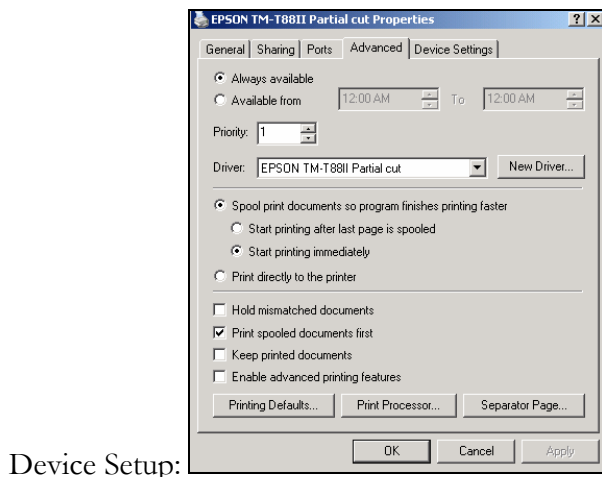
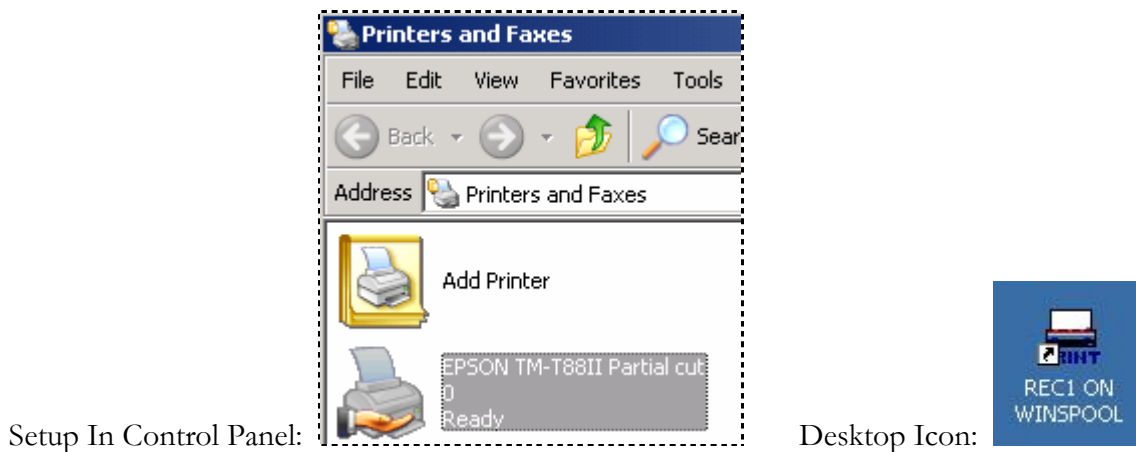
**LPT1**    **LPT2**    **LPT3**    [\\ComputerName\PrinterShareName](#)

# WINSpool

Unlike other spoolers, you **MUST INSTALL A WINDOWS PRINTER DRIVER** in order to use WINSpool.

**NEVER** install a Windows Printer Driver if you are using the other spooler programs. WINSpool is the only spooler that requires a printer driver to be loaded!

After you create a shortcut icon on your desktop (as shown below), we recommend you move it into the STARTUP folder so that each time the computer boots, the printer is automatically serviced. Remember, printing will only occur if a spooler is running.



Every printer comes with a manufacturer's printer driver software. This software must be loaded because WINSpool sends print jobs in RAW format directly to the physical or virtual port specified. You may freely mix WINSpool with the other spoolers.